



TYPE 2 MALE CONNECTOR ASSEMBLING



Type 2 Mennekes IEC 62196-2

Features:

Charging plug meet: IEC 62196-2
Operating temperature: -30°C to +50°C
Excellent protection performance
Protection Grade IP65-Working condition.

Mechanical Properties

Mechanical life: no-load plug in / pull out
> 10000times
Impact of external force: can afford 1m

Warnings:

- . Carefully read these instructions and your vehicle owner's handbook before charging your EV.
- . Use only on the mains with fault

drop and 2T vehicle run over pressure

Electric Performance

Rated Current and Voltage: as table attached below

- . Insulation Resistance: >1000MΩ (DC500V)
- . Terminal Temperature Rise: < 50K
- . Contact impedance: 0.5 mΩ Max

current circuit breaker.

- . DO not use this product if the cable is damaged.
- . The product must be grounded.
- . DO not use this unit with an extension

cord or adapter.

- . DO not insert any fingers into the charging plug.
- . The unit contains no user serviceable parts. DO not try to repair or service the charging cable yourself.
- . If the unit does not work properly in accordance with the operating instructions, do not use this unit. Contact by email to info@evplugchargers.com for a repair or replacement.
- . Use the product under normal away from high temperature erosive materials or ignition source.
- . DO not contact metal conductor to prevent electric shock accident.
- . Product shell is made of thermoplastic, please do not pound it

Charging:

1. Check the power distribution cable for damage before powering up.
2. Plug the mains plug into the EV charger.
3. Make sure that the EV charger outlet complies with national standards

4. Plug the vehicle plug into the socket of your vehicle.
5. Make sure that the vehicle connector is fully inserted until it clicks into place.
6. When your EV is fully charged
7. Disconnect the EV charger side gun.
8. Disconnect the EV side.
9. Cover the connector and cover the gun
10. Insert the charging cable into the carrying case.

GUARANTEE:

Damage caused for the following reasons is not covered by the warranty:

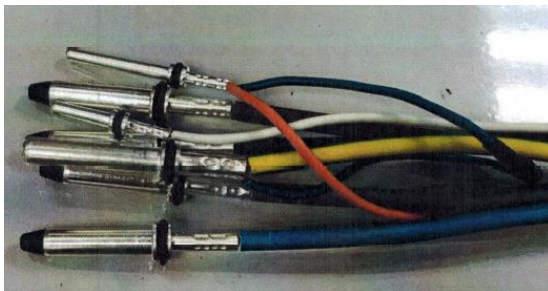
1. Improper handling, installation, use and maintenance by the user.
2. The product falls into the water.

This warranty is for the original purchaser only and is NOT transferable.

PLEASE NOTE: This document includes the most recent information at the time of going to press. EVplug reserves the right to make changes to this product without notice. Changes or modifications to this product by a service center other than the authorized one may void the product warranty.

Assembly:

1. Performs cable crimping

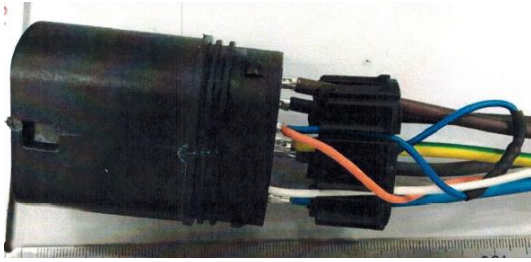


2. Pass the cables through the connector security piece

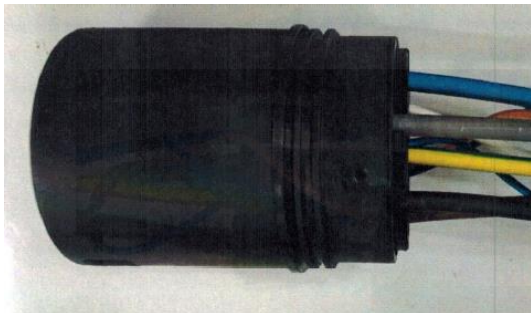


3. Insert the connectors on the front of the gun looking at the numbers that appear on the front of the gun, according to the following list:
 - Center, ground cable color yellow into connector PE
 - Line 1 on L1, and if it is three-phase, Line 2 in L2 and Line 3 in L3
 - The neutral connector (Blue wire) in the N
 - The long pin in the PP

- The short Pin in PN



4. Push the piece at point 1 until you hear a click. Once fitted, it cannot be removed again.



5. Put the three small black screws into the black frame to prevent it from coming loose.

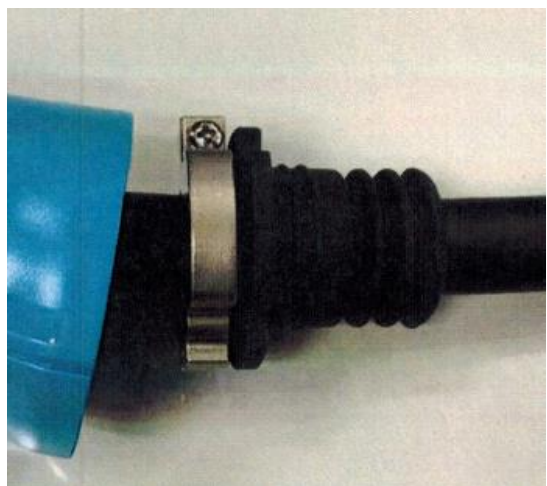


6. Now insert the complete set into the white frame and push until you hear a click. Once attached, it cannot be released again.

7. Now insert the black rubber and the back piece on the other side of the cable



8. Attach the metal vise with the screw that comes in the large silver bag.



9. To finish mounting, insert the three large black screws on the back cover and the small silver screw on the bottom of the gun, where the features appear.